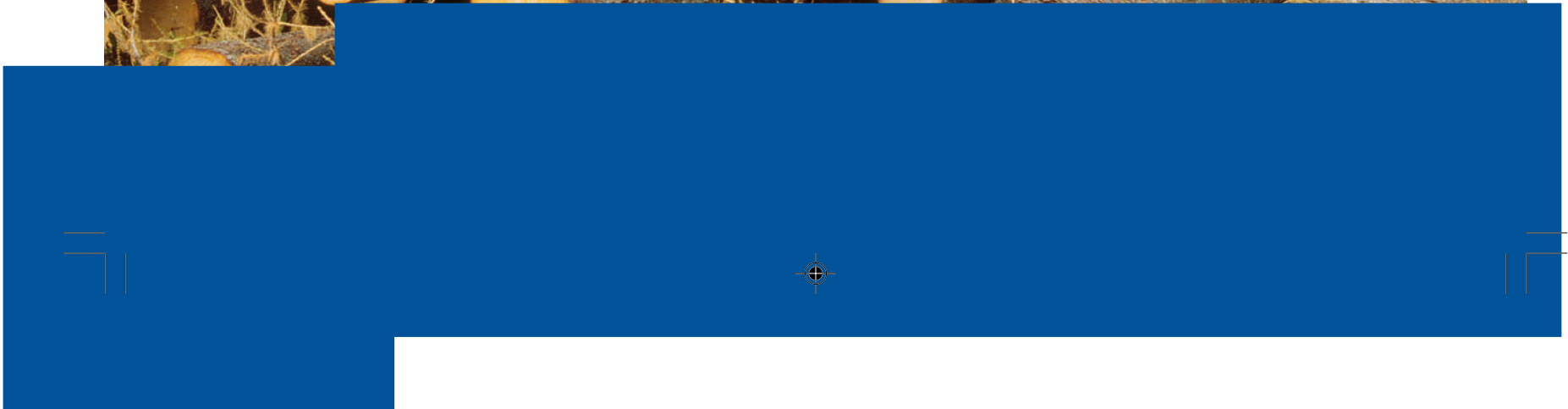
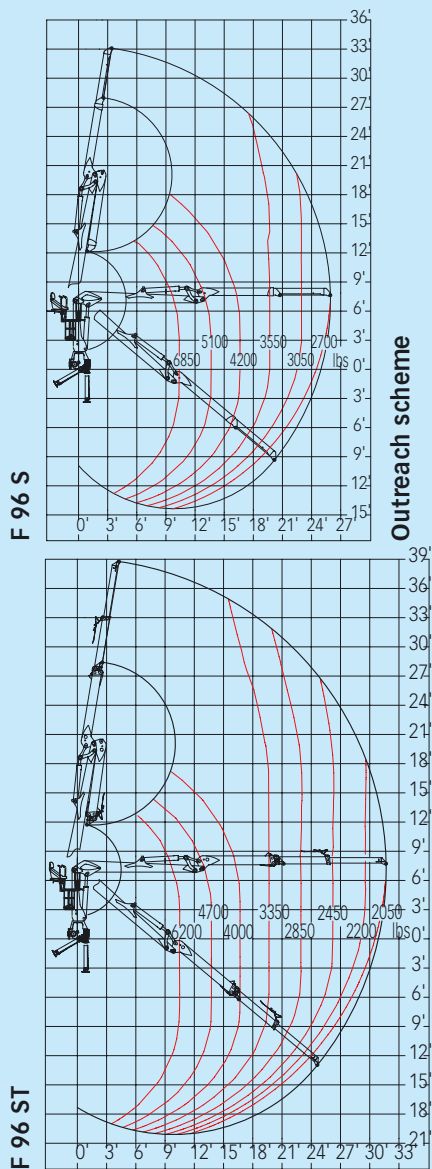
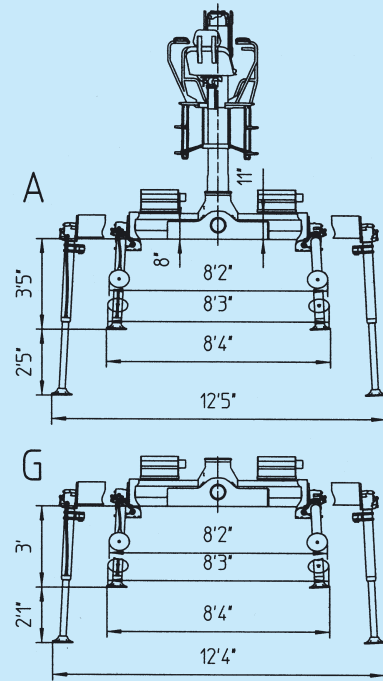
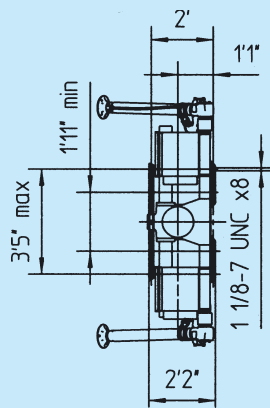
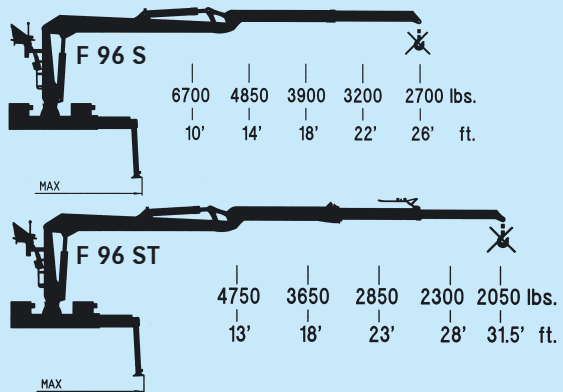




LOGLIFT 96 S



**Capacity diagram
(Permitted load without lifting accessories)**



HYDRAULIC LOG LOADER SPECIFICATION		F 96 S 79 (standard)	F 96 ST 96 (with telescopic boom)
Lifting moment	gross	lbf.ft 89980	
	net	lbf.ft 70070 65640	
Max. outreach	ft	25'11"	31'8"
Stroke of boom extension	ft	5'2"	10'6"
Slewing torque, gross	lbf.ft	16800	
Slewing angle	(degrees)°	415/424	
Height: bottom → upper joint in pillar	ft	7'1"	
Road width	ft	8'2"	
Weight without oil and grapple	lbs	4060	4320
PUMP RECOMMENDED	working pressure	psi 3480	
	oil flow	US gpm 21-24 / 2 x 18.5-21	
	Variable displacement pump	l/min 42 min	
EQUIPMENT			
ROTATORS	models	MR 8 AF	GV 12-2
Slewing angle	unlimited∞	∞	∞
Slewing torque (3480 psi)	lbf.ft	1400	1550
Weight	lbs	123	128
LOG GRABS	models	X 42	X 56
Jaw pressure (3480 psi)	lbf	4220	3990
Holding area	ft ²	4.3	5.4
Weight	lbs	485	496

We reserve the right to make changes. Illustrations, drawings and data are not always in accordance with the latest version or standard model in production. The loaders have to be equipped, installed and operated in conformity with the local laws and stipulations.



Loglift Jonsered Cranes Oy Ab
 Tehdaskatu 7, P.O.Box 54
 FIN-24101 Salo, Finland
 Tel. +358 204 55 2599, fax +358 204 55 2500
 www.loglift.com

Cargotec Inc.
 12233 Williams Road
 Perrysburgh, Ohio 43551, USA
 Tel. (419) 482-6000, fax (419) 482-6001
 www.cargotec.com

