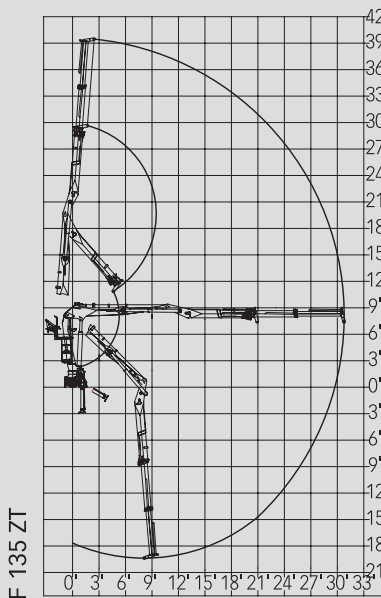
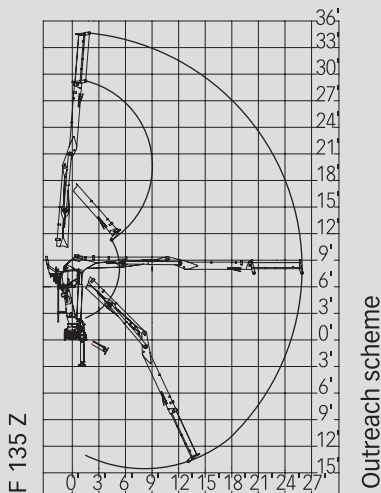
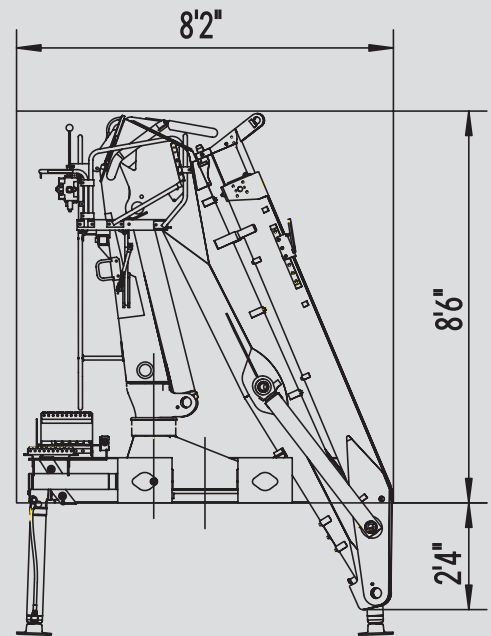
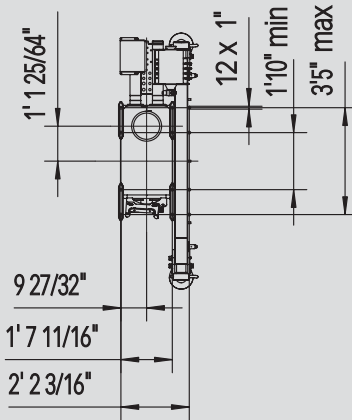
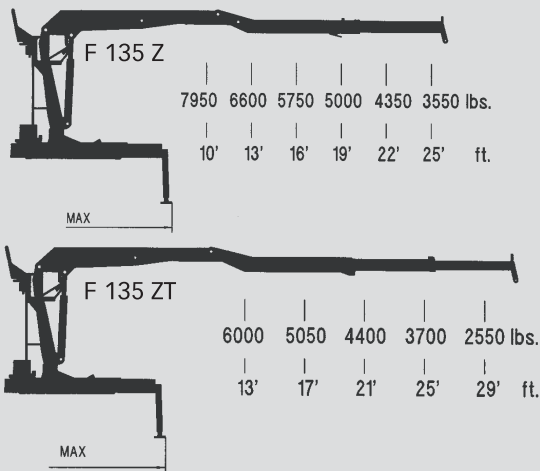


Loglift 135 Z



Capacity diagram
(Permitted load without lifting accessories)



| Hydraulic Log Loader Loglift 135 Z Specification | | F 135 Z 79 | F 135 ZT 94 |
|--|------------------------|----------------|-----------------------|
| Lifting moment, net | lbf.ft | 95150 | 93700 |
| Max. outreach | ft | 25'11" | 30'9" |
| Stroke of boom extension | ft | 5'5" | 9'10" |
| Slewing torque, gross | lbf.ft | 21100 | |
| Slewing angle | (degrees) ^o | 425 | |
| Height: bottom → upper joint in pillar | ft | 8'1" | |
| Road height | ft | 8'6" | |
| Road width | ft | 8'2" | |
| Weight without oil and grab | lbs | 4540 | 4830 |
| Pump recommended | working pressure | psi | 3630 |
| | oil flow | US gpm | 1x18,5 - 24 / 2x16-21 |
| | power input | hp | 42-94 |
| Equipment | | | |
| Rotators | models | MR 8 AF | GV 12-2 |
| Slewing angle | unlimited ∞ | ∞ | ∞ |
| Slewing torque (3340 psi) | lbf.ft | 1330 | 1840 |
| Weight | lbs | 123 | 128 |
| Log grabs | models | X42 | X56 |
| Jaw pressure (3630 psi) | lbf | 4400 | 4150 |
| Holding area | ft ² | 4,3 | 5,4 |
| Weight | lbs | 485 | 496 |